



Three Parkway | Availabilities

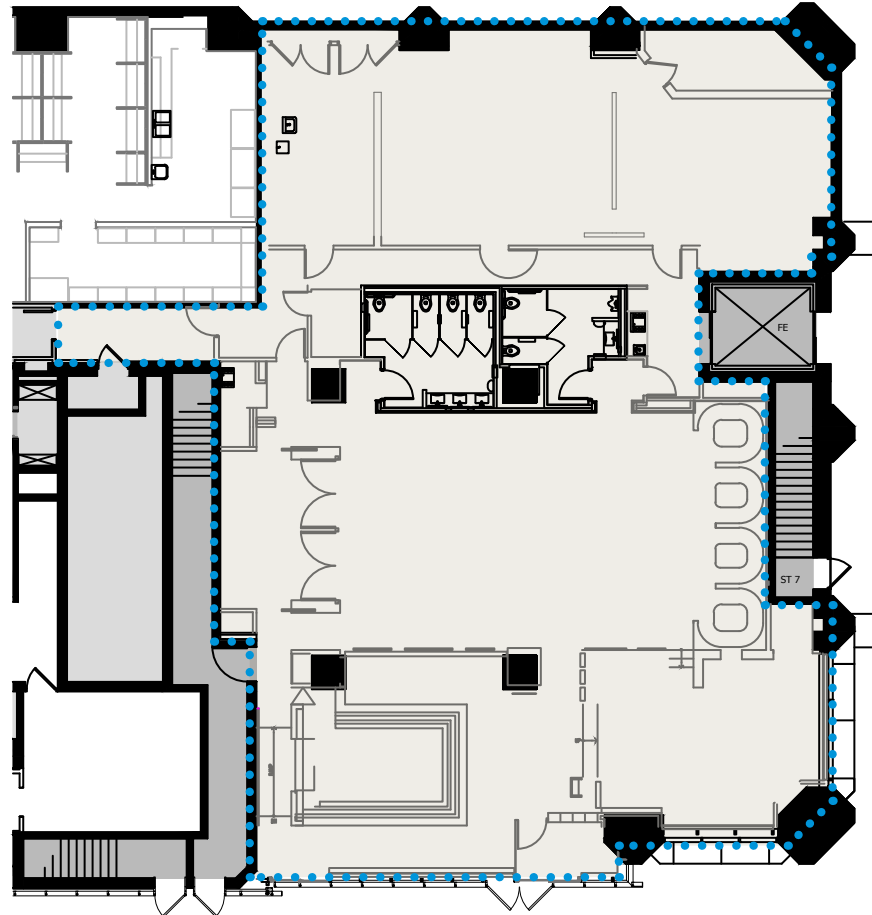
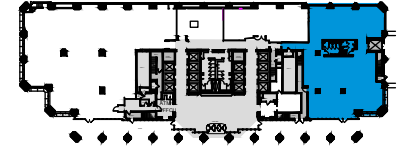
1601 Cherry Street • Philadelphia, PA

Floor 1

Suite 150

Size 6,121 RSF

Key



For Leasing Information

Alex Breitmayer

Executive Vice President
+1 215 399 1813
alex.breitmayer@am.jll.com

Josh Sloan

Managing Director
+1 215 988 5554
joshua.sloan@am.jll.com

David Healy

Executive Vice President
+1 215 988 5555
david.healy@am.jll.com

Jones Lang LaSalle Brokerage, Inc.

1650 Arch Street Suite 2500
Philadelphia PA, 19103
+1 215 988 5500



MRP | REALTY

Although information has been obtained from sources deemed reliable, neither Owner nor JLL makes any guarantees, warranties or representations, express or implied, as to the completeness or accuracy as to the information contained herein. Any projections, opinions, assumptions or estimates used are for example only. There may be differences between projected and actual results, and those differences may be material. The Property may be withdrawn without notice. Neither Owner nor JLL accepts any liability for any loss or damage suffered by any party resulting from reliance on this information. If the recipient of this information has signed a confidentiality agreement regarding this matter, this information is subject to the terms of that agreement. ©2021. Jones Lang LaSalle Brokerage, Inc. All rights reserved.



Three Parkway | Availabilities

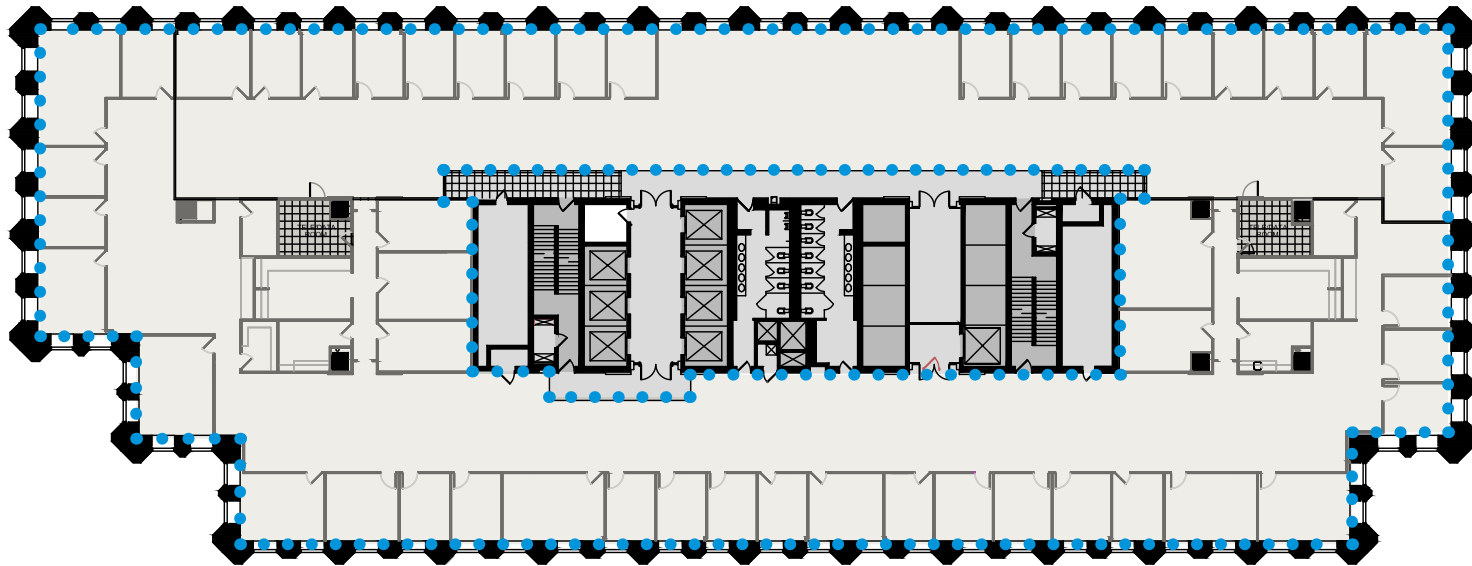
1601 Cherry Street • Philadelphia, PA

Floor 4

Suite 400

Size 27,520 RSF

Full floor available



For Leasing Information

Alex Breitmayer
Executive Vice President
+1 215 399 1813
alex.breitmayer@am.jll.com

Josh Sloan
Managing Director
+1 215 988 5554
joshua.sloan@am.jll.com

David Healy
Executive Vice President
+1 215 988 5555
david.healy@am.jll.com

Jones Lang LaSalle Brokerage, Inc.
1650 Arch Street Suite 2500
Philadelphia PA, 19103
+1 215 988 5500



Although information has been obtained from sources deemed reliable, neither Owner nor JLL makes any guarantees, warranties or representations, express or implied, as to the completeness or accuracy as to the information contained herein. Any projections, opinions, assumptions or estimates used are for example only. There may be differences between projected and actual results, and those differences may be material. The Property may be withdrawn without notice. Neither Owner nor JLL accepts any liability for any loss or damage suffered by any party resulting from reliance on this information. If the recipient of this information has signed a confidentiality agreement regarding this matter, this information is subject to the terms of that agreement. ©2021. Jones Lang LaSalle Brokerage, Inc. All rights reserved.



Three Parkway | Availabilities

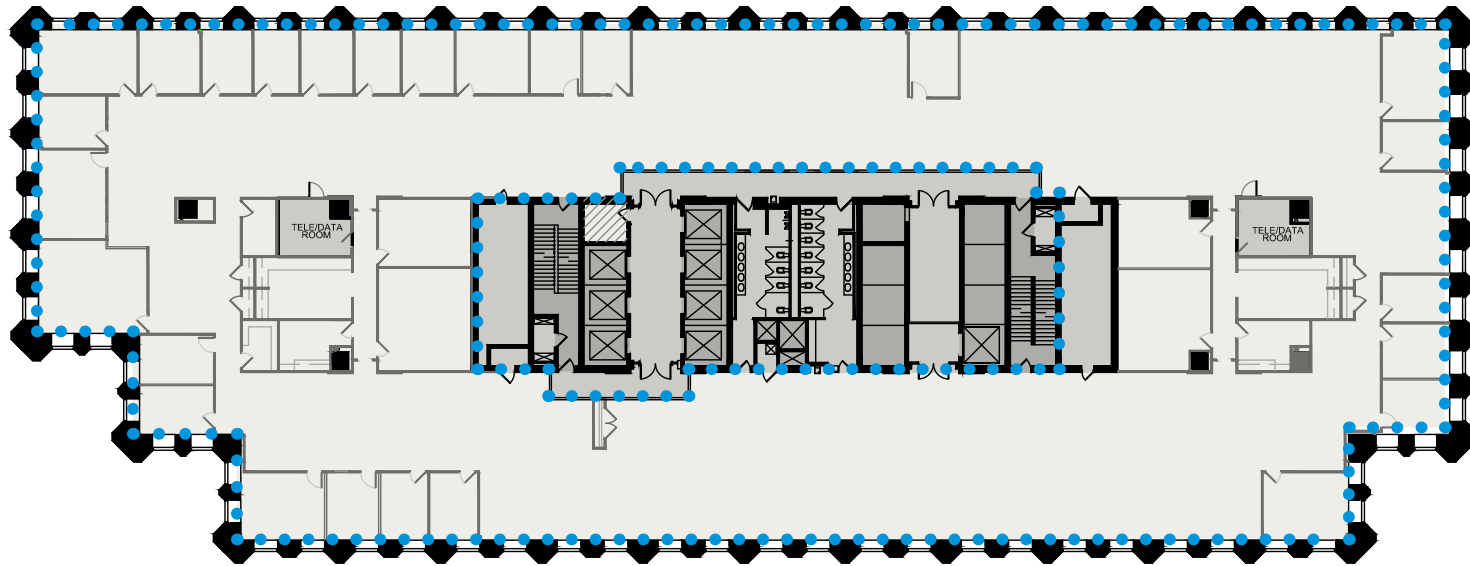
1601 Cherry Street • Philadelphia, PA

Floor 5

Suite 500

Size 19,523 RSF

Full floor available



For Leasing Information

Alex Breitmayer
Executive Vice President
+1 215 399 1813
alex.breitmayer@am.jll.com

Josh Sloan
Managing Director
+1 215 988 5554
joshua.sloan@am.jll.com

David Healy
Executive Vice President
+1 215 988 5555
david.healy@am.jll.com

Jones Lang LaSalle Brokerage, Inc.
1650 Arch Street Suite 2500
Philadelphia PA, 19103
+1 215 988 5500



Although information has been obtained from sources deemed reliable, neither Owner nor JLL makes any guarantees, warranties or representations, express or implied, as to the completeness or accuracy as to the information contained herein. Any projections, opinions, assumptions or estimates used are for example only. There may be differences between projected and actual results, and those differences may be material. The Property may be withdrawn without notice. Neither Owner nor JLL accepts any liability for any loss or damage suffered by any party resulting from reliance on this information. If the recipient of this information has signed a confidentiality agreement regarding this matter, this information is subject to the terms of that agreement. ©2021. Jones Lang LaSalle Brokerage, Inc. All rights reserved.



Three Parkway | Availabilities

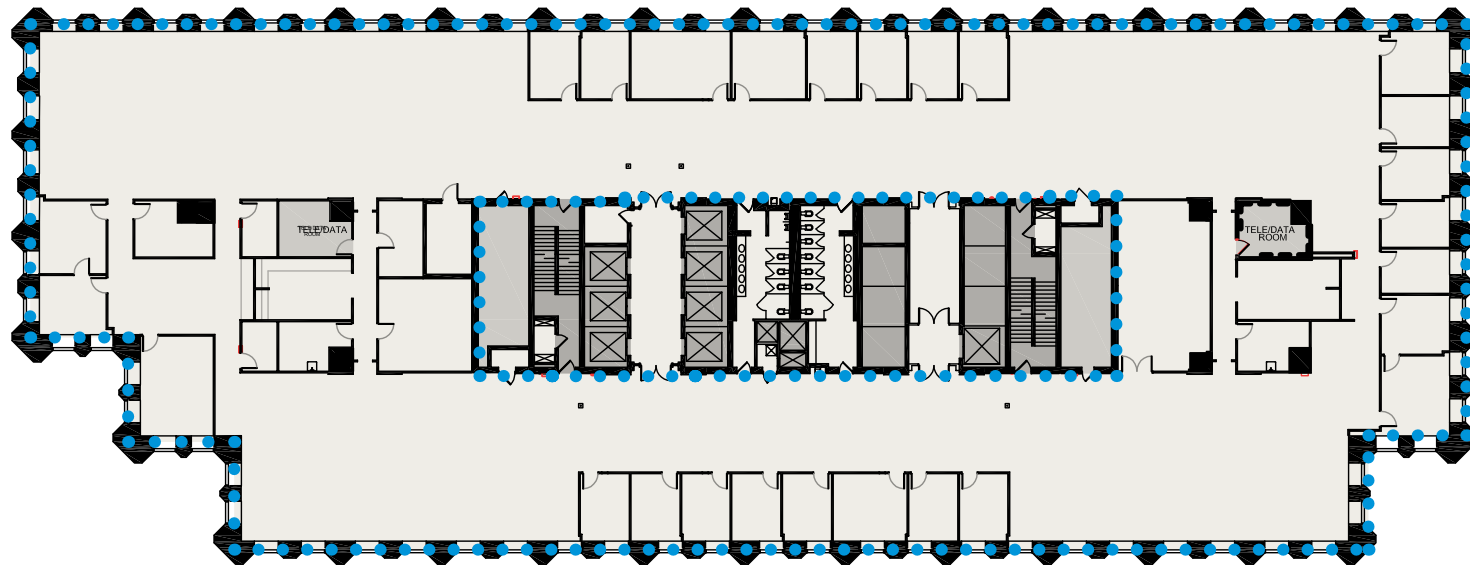
1601 Cherry Street • Philadelphia, PA

Floor 7

Suite 700

Size 27,520 RSF

Full floor available



For Leasing Information

Alex Breitmayer
Executive Vice President
+1 215 399 1813
alex.breitmayer@am.jll.com

Josh Sloan
Managing Director
+1 215 988 5554
joshua.sloan@am.jll.com

David Healy
Executive Vice President
+1 215 988 5555
david.healy@am.jll.com

Jones Lang LaSalle Brokerage, Inc.
1650 Arch Street Suite 2500
Philadelphia PA, 19103
+1 215 988 5500



MRP | REALTY

Although information has been obtained from sources deemed reliable, neither Owner nor JLL makes any guarantees, warranties or representations, express or implied, as to the completeness or accuracy as to the information contained herein. Any projections, opinions, assumptions or estimates used are for example only. There may be differences between projected and actual results, and those differences may be material. The Property may be withdrawn without notice. Neither Owner nor JLL accepts any liability for any loss or damage suffered by any party resulting from reliance on this information. If the recipient of this information has signed a confidentiality agreement regarding this matter, this information is subject to the terms of that agreement. ©2021. Jones Lang LaSalle Brokerage, Inc. All rights reserved.



Three Parkway | Availabilities

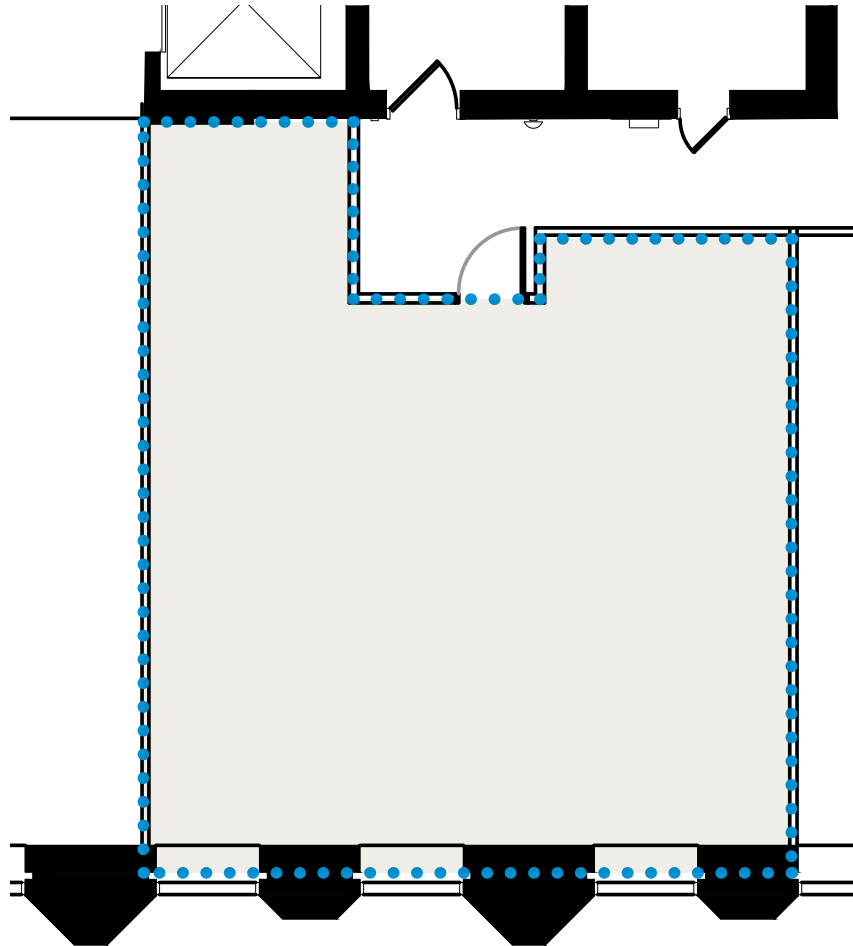
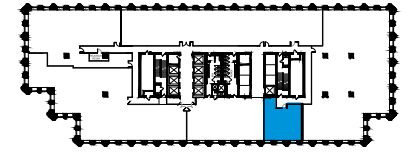
1601 Cherry Street • Philadelphia, PA

Floor 8

Suite 800

Size 1,198 RSF

Key



For Leasing Information

Alex Breitmayer
Executive Vice President
+1 215 399 1813
alex.breitmayer@am.jll.com

Josh Sloan
Managing Director
+1 215 988 5554
joshua.sloan@am.jll.com

David Healy
Executive Vice President
+1 215 988 5555
david.healy@am.jll.com

Jones Lang LaSalle Brokerage, Inc.
1650 Arch Street Suite 2500
Philadelphia PA, 19103
+1 215 988 5500



Although information has been obtained from sources deemed reliable, neither Owner nor JLL makes any guarantees, warranties or representations, express or implied, as to the completeness or accuracy as to the information contained herein. Any projections, opinions, assumptions or estimates used are for example only. There may be differences between projected and actual results, and those differences may be material. The Property may be withdrawn without notice. Neither Owner nor JLL accepts any liability for any loss or damage suffered by any party resulting from reliance on this information. If the recipient of this information has signed a confidentiality agreement regarding this matter, this information is subject to the terms of that agreement. ©2021. Jones Lang LaSalle Brokerage, Inc. All rights reserved.



Three Parkway | Availabilities

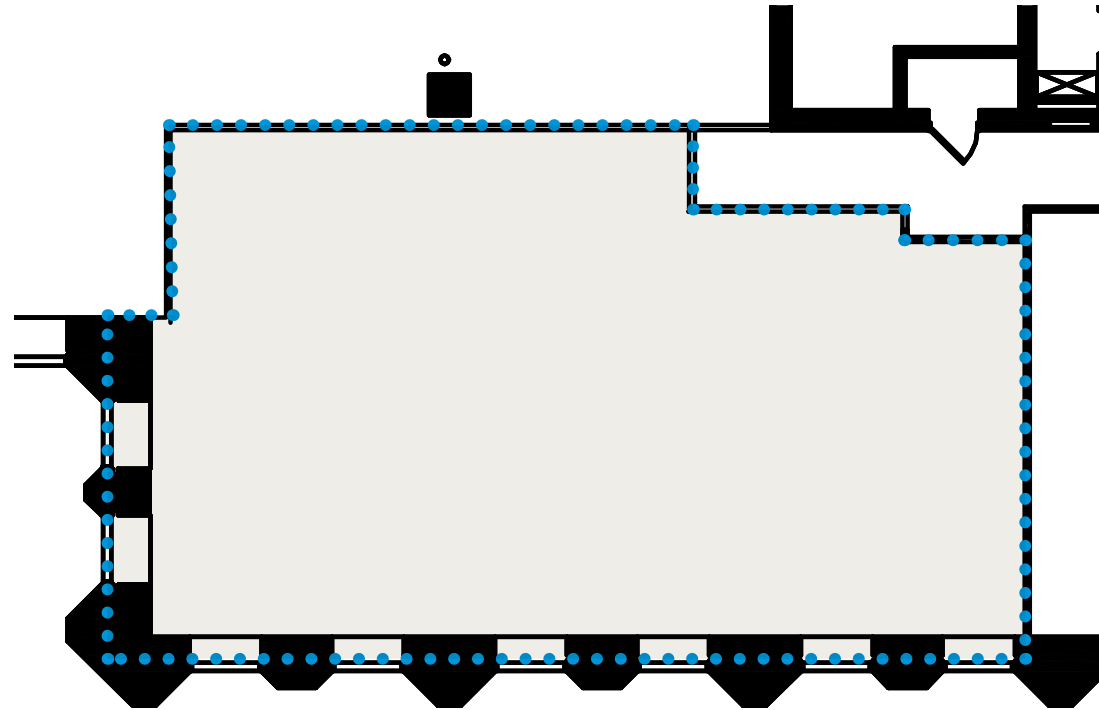
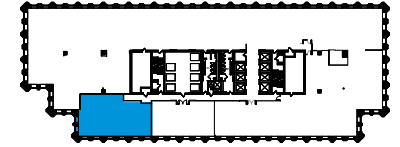
1601 Cherry Street • Philadelphia, PA

Floor 13

Suite 1320

Size 2,516 RSF

Key



For Leasing Information

Alex Breitmayer

Executive Vice President
+1 215 399 1813
alex.breitmayer@am.jll.com

Josh Sloan

Managing Director
+1 215 988 5554
joshua.sloan@am.jll.com

David Healy

Executive Vice President
+1 215 988 5555
david.healy@am.jll.com

Jones Lang LaSalle Brokerage, Inc.

1650 Arch Street Suite 2500
Philadelphia PA, 19103
+1 215 988 5500



Although information has been obtained from sources deemed reliable, neither Owner nor JLL makes any guarantees, warranties or representations, express or implied, as to the completeness or accuracy as to the information contained herein. Any projections, opinions, assumptions or estimates used are for example only. There may be differences between projected and actual results, and those differences may be material. The Property may be withdrawn without notice. Neither Owner nor JLL accepts any liability for any loss or damage suffered by any party resulting from reliance on this information. If the recipient of this information has signed a confidentiality agreement regarding this matter, this information is subject to the terms of that agreement. ©2021. Jones Lang LaSalle Brokerage, Inc. All rights reserved.



Three Parkway | Availabilities

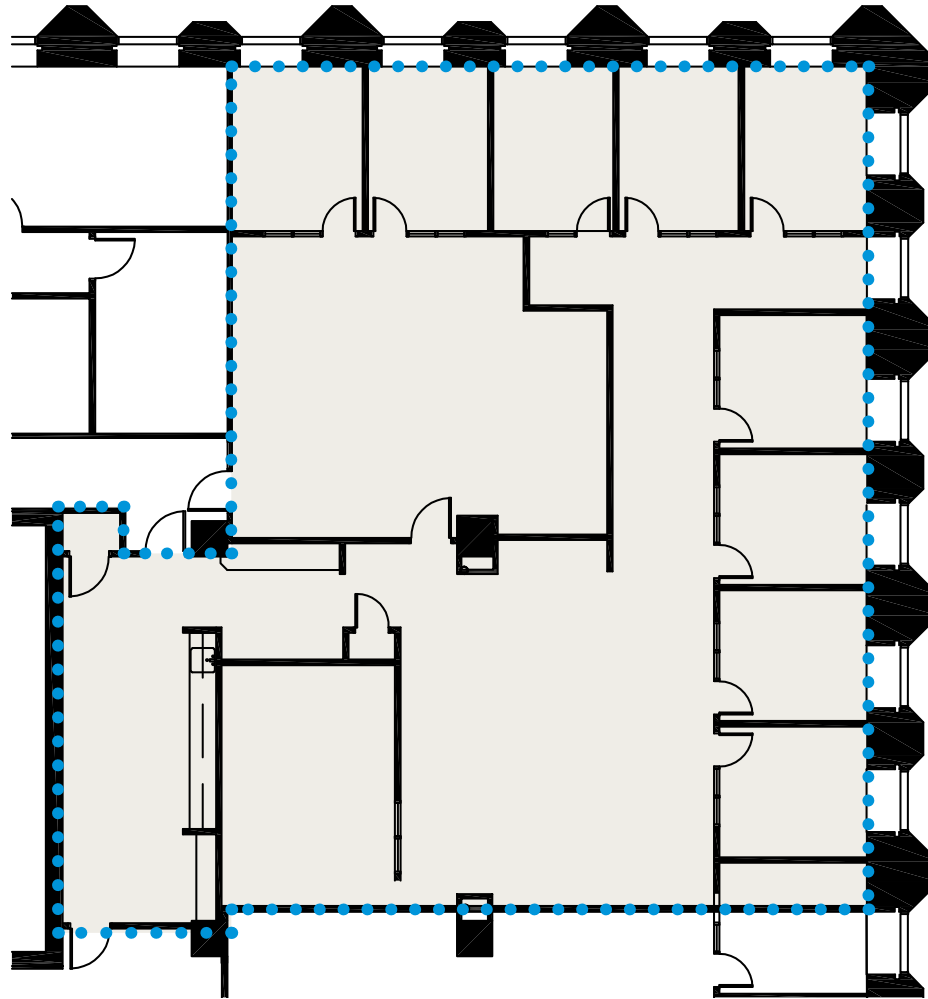
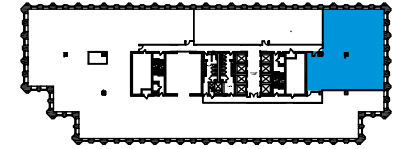
1601 Cherry Street • Philadelphia, PA

Floor 15

Suite 1510

Size 4,338 RSF

Key



For Leasing Information

Alex Breitmayer

Executive Vice President
+1 215 399 1813
alex.breitmayer@am.jll.com

Josh Sloan

Managing Director
+1 215 988 5554
joshua.sloan@am.jll.com

David Healy

Executive Vice President
+1 215 988 5555
david.healy@am.jll.com

Jones Lang LaSalle Brokerage, Inc.

1650 Arch Street Suite 2500
Philadelphia PA, 19103
+1 215 988 5500



MRP | REALTY

Although information has been obtained from sources deemed reliable, neither Owner nor JLL makes any guarantees, warranties or representations, express or implied, as to the completeness or accuracy as to the information contained herein. Any projections, opinions, assumptions or estimates used are for example only. There may be differences between projected and actual results, and those differences may be material. The Property may be withdrawn without notice. Neither Owner nor JLL accepts any liability for any loss or damage suffered by any party resulting from reliance on this information. If the recipient of this information has signed a confidentiality agreement regarding this matter, this information is subject to the terms of that agreement. ©2021. Jones Lang LaSalle Brokerage, Inc. All rights reserved.



Three Parkway | Availabilities

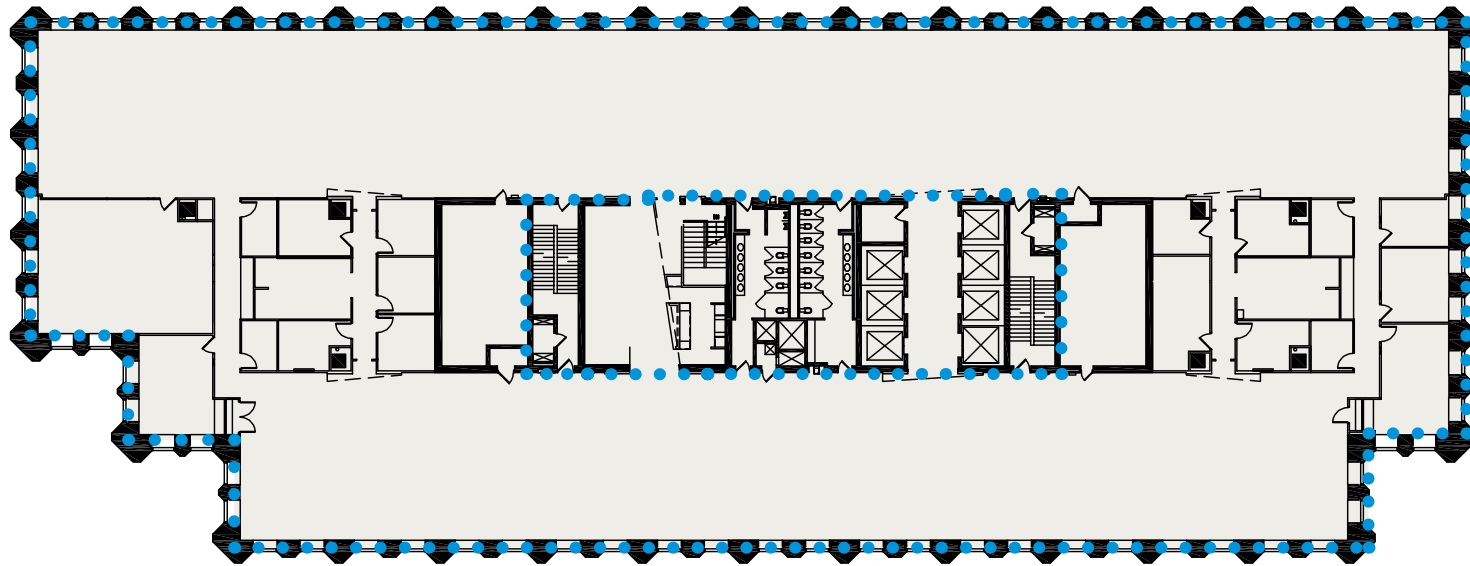
1601 Cherry Street • Philadelphia, PA

Floor 20

Suite 2000

Size 27,935 RSF

Full floor available



For Leasing Information

Alex Breitmayer
Executive Vice President
+1 215 399 1813
alex.breitmayer@am.jll.com

Josh Sloan
Managing Director
+1 215 988 5554
joshua.sloan@am.jll.com

David Healy
Executive Vice President
+1 215 988 5555
david.healy@am.jll.com

Jones Lang LaSalle Brokerage, Inc.
1650 Arch Street Suite 2500
Philadelphia PA, 19103
+1 215 988 5500



MRP | REALTY

Although information has been obtained from sources deemed reliable, neither Owner nor JLL makes any guarantees, warranties or representations, express or implied, as to the completeness or accuracy as to the information contained herein. Any projections, opinions, assumptions or estimates used are for example only. There maybe differences between projected and actual results, and those differences may be material. The Property may be withdrawn without notice. Neither Owner nor JLL accepts any liability for any loss or damage suffered by any party resulting from reliance on this information. If the recipient of this information has signed a confidentiality agreement regarding this matter, this information is subject to the terms of that agreement. ©2021. Jones Lang LaSalle Brokerage, Inc. All rights reserved.