



# Three Parkway | Availabilities

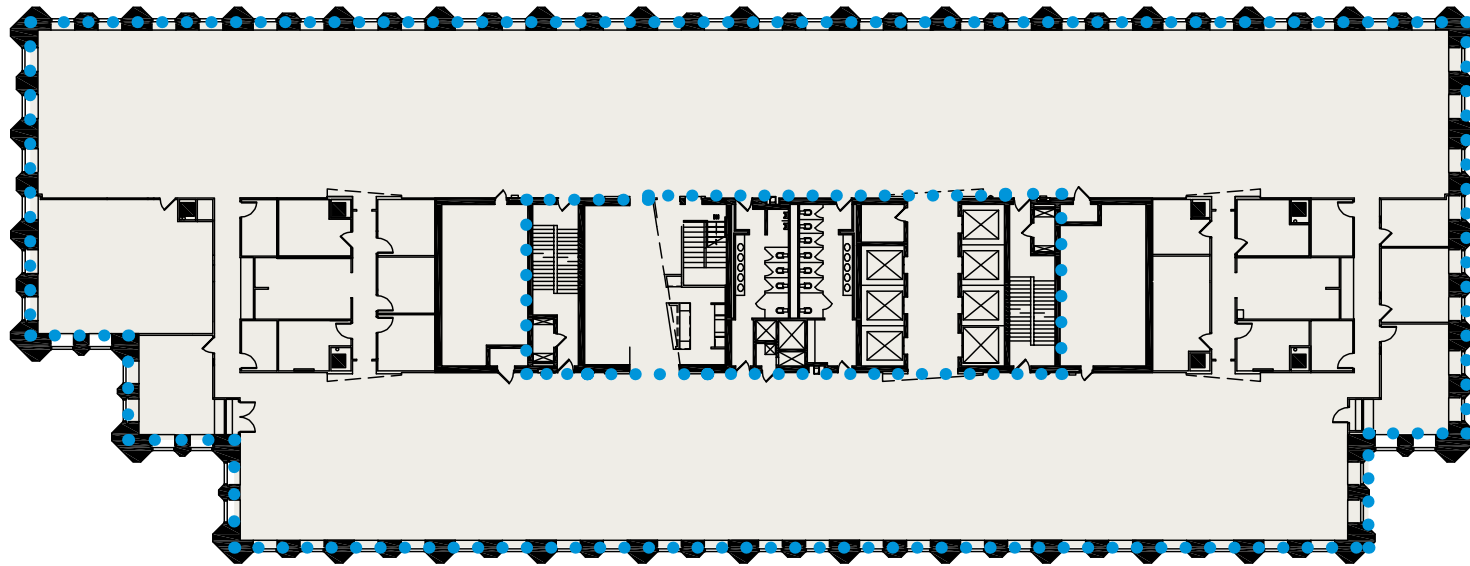
1601 Cherry Street • Philadelphia, PA

Floor 20

Suite 2000

Size 27,935 RSF

Full floor available



## For Leasing Information

### Alex Breitmayer

Executive Vice President  
+1 215 399 1813  
alex.breitmayer@am.jll.com

### Josh Sloan

Managing Director  
+1 215 988 5554  
joshua.sloan@am.jll.com

### David Healy

Executive Vice President  
+1 215 988 5555  
david.healy@am.jll.com

### Jones Lang LaSalle Brokerage, Inc.

1650 Arch Street Suite 2500  
Philadelphia PA, 19103  
+1 215 988 5500



MRP | REALTY

Although information has been obtained from sources deemed reliable, neither Owner nor JLL makes any guarantees, warranties or representations, express or implied, as to the completeness or accuracy as to the information contained herein. Any projections, opinions, assumptions or estimates used are for example only. There may be differences between projected and actual results, and those differences may be material. The Property may be withdrawn without notice. Neither Owner nor JLL accepts any liability for any loss or damage suffered by any party resulting from reliance on this information. If the recipient of this information has signed a confidentiality agreement regarding this matter, this information is subject to the terms of that agreement. ©2021. Jones Lang LaSalle Brokerage, Inc. All rights reserved.