

Retail space:

6,121 s.f. available for lease!

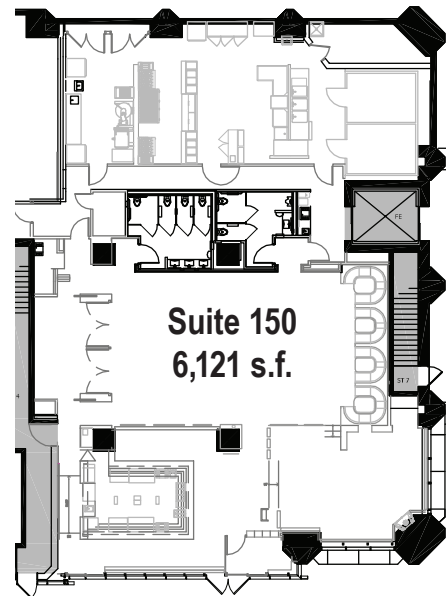
Visit threeparkway.com



Three Parkway

1601 Cherry Street, Philadelphia, PA 19102

- High profile location on Ben Franklin Parkway near Logan Circle and Pennsylvania Convention Center
- Dedicated entrance with prominent signage opportunities
- Seating capacity for 100 indoors – and large outdoor patio area
- Fully equipped kitchen with multiple walk ins
- Basement storage and walk in refrigerator with glycol tap lines
- Strong area demographics with over 55,000 employees within a .25 mile radius
- Landlord willing to deliver in shell condition for conversion to office, retail or medical use



For more information, please contact:

Josh Sloan

+1 215 988 5554

joshua.sloan@am.jll.com

David Healy

+1 215 988 5555

david.healy@am.jll.com

Alex Breitmayer

+1215 399 1813

alex.breitmayer@am.jll.com

JLL | 1650 Arch Street, Suite 2500

Philadelphia, Pennsylvania 19103

+1 215 988 5500 | www.jll.com/philadelphia

MRP | REALTY



Although information has been obtained from sources deemed reliable, Owner, Jones Lang LaSalle, and/or their representatives, brokers or agents make no guarantees as to the accuracy of the information contained herein, and offer the Property without express or implied warranties of any kind. The Property may be withdrawn without notice. If the recipient of this information has signed a confidentiality agreement regarding this matter, this information is subject to the terms of that agreement. ©2016. Jones Lang LaSalle. All rights reserved.