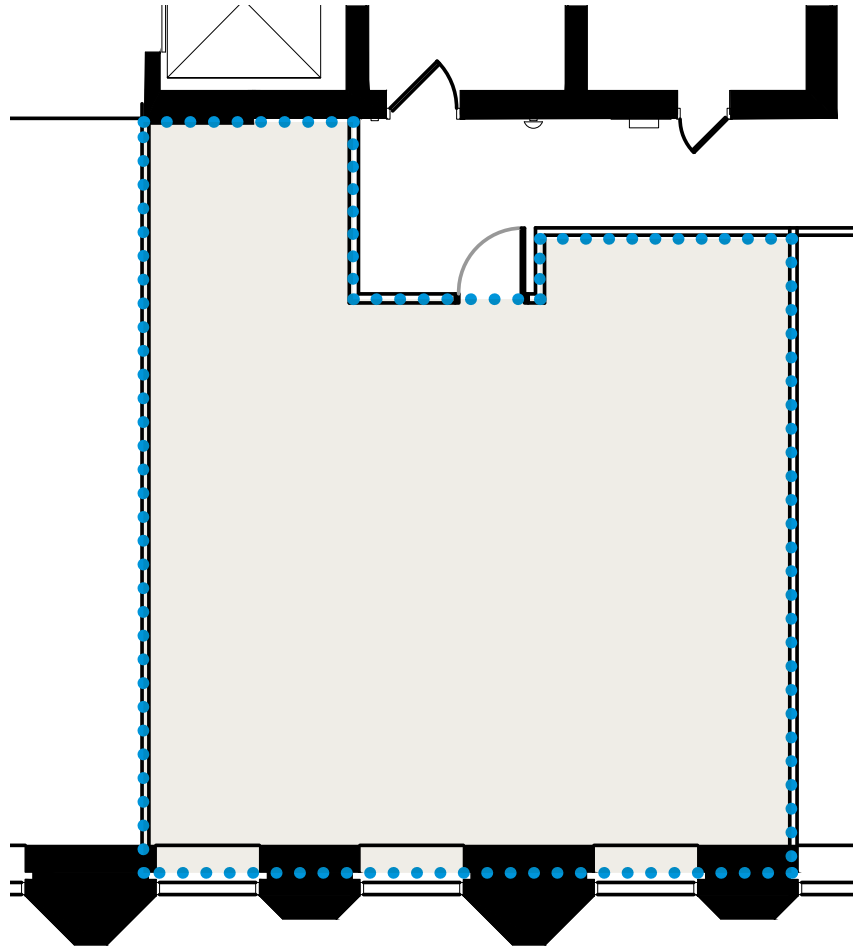
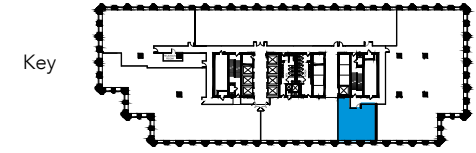




Three Parkway | Availabilities

1601 Cherry Street • Philadelphia, PA

Floor 8	
Suite	800
Size	1,198 RSF



For Leasing Information

Alex Breitmayer
 Senior Vice President
 +1 215 399 1813
 alex.breitmayer@am.jll.com

Josh Sloan
 Managing Director
 +1 215 988 5554
 joshua.sloan@am.jll.com

David Healy
 Executive Vice President
 +1 215 988 5555
 david.healy@am.jll.com

JLL | Jones Lang LaSalle
 1650 Arch Street Suite 2500
 Philadelphia PA, 19103
 +1 215 988 5500

©2020 JLL | Jones Lang LaSalle IP, Inc. All rights reserved. All information contained herein is from sources deemed reliable; however, no representation or warranty is made to the accuracy thereof.

