



Three Parkway | Availabilities

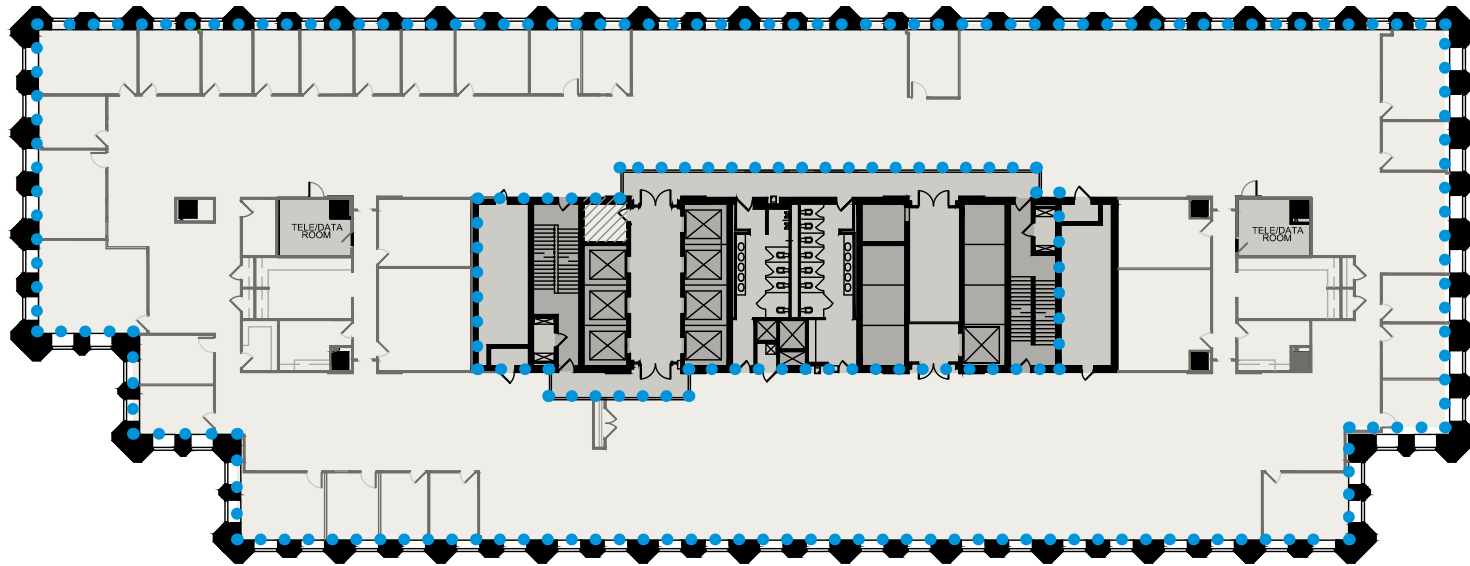
1601 Cherry Street • Philadelphia, PA

Floor 5

Suite 500

Size 19,523 RSF

Full floor available



For Leasing Information

Alex Breitmayer
Senior Vice President
+1 215 399 1813
alex.breitmayer@am.jll.com

Josh Sloan
Managing Director
+1 215 988 5554
joshua.sloan@am.jll.com

David Healy
Executive Vice President
+1 215 988 5555
david.healy@am.jll.com

JLL | Jones Lang LaSalle
1650 Arch Street Suite 2500
Philadelphia PA, 19103
+1 215 988 5500



MRP | REALTY