



Three Parkway | Availabilities

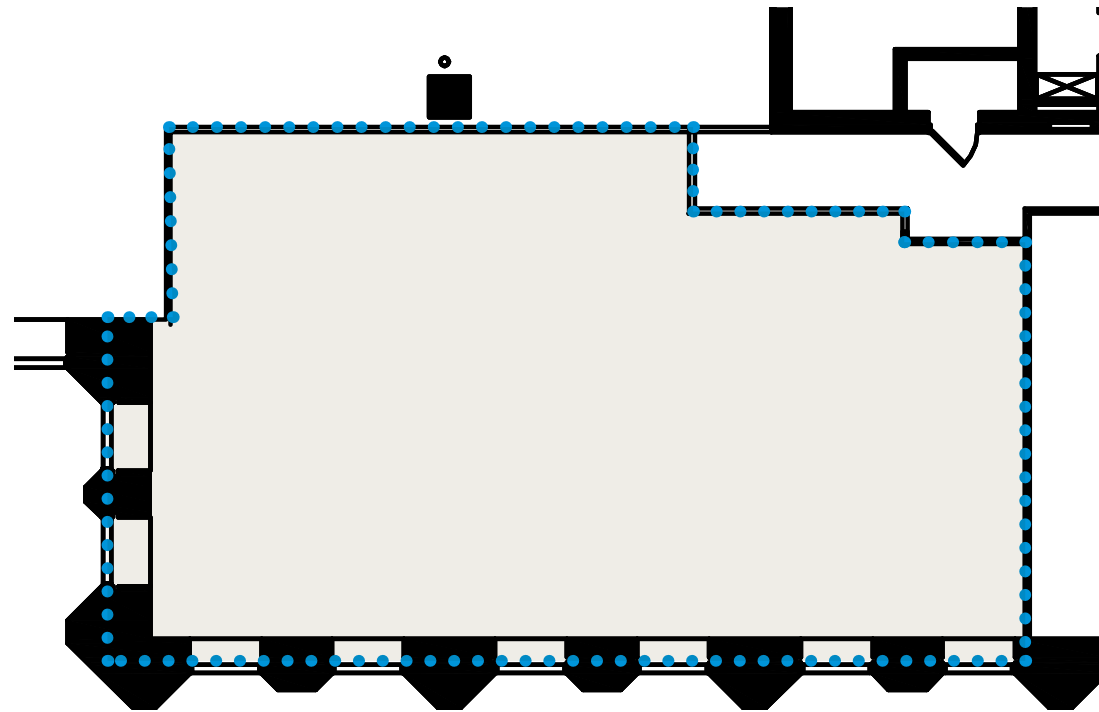
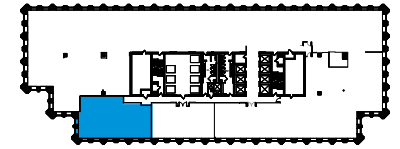
1601 Cherry Street • Philadelphia, PA

Floor 13

Suite 1320

Size 2,516 RSF

Key



For Leasing Information

Alex Breitmayer
Senior Vice President
+1 215 399 1813
alex.breitmayer@am.jll.com

Josh Sloan
Managing Director
+1 215 988 5554
joshua.sloan@am.jll.com

David Healy
Executive Vice President
+1 215 988 5555
david.healy@am.jll.com

JLL | Jones Lang LaSalle
1650 Arch Street Suite 2500
Philadelphia PA, 19103
+1 215 988 5500



MRP | REALTY

©2020 JLL | Jones Lang LaSalle IP, Inc. All rights reserved. All information contained herein is from sources deemed reliable; however, no representation or warranty is made to the accuracy thereof.