



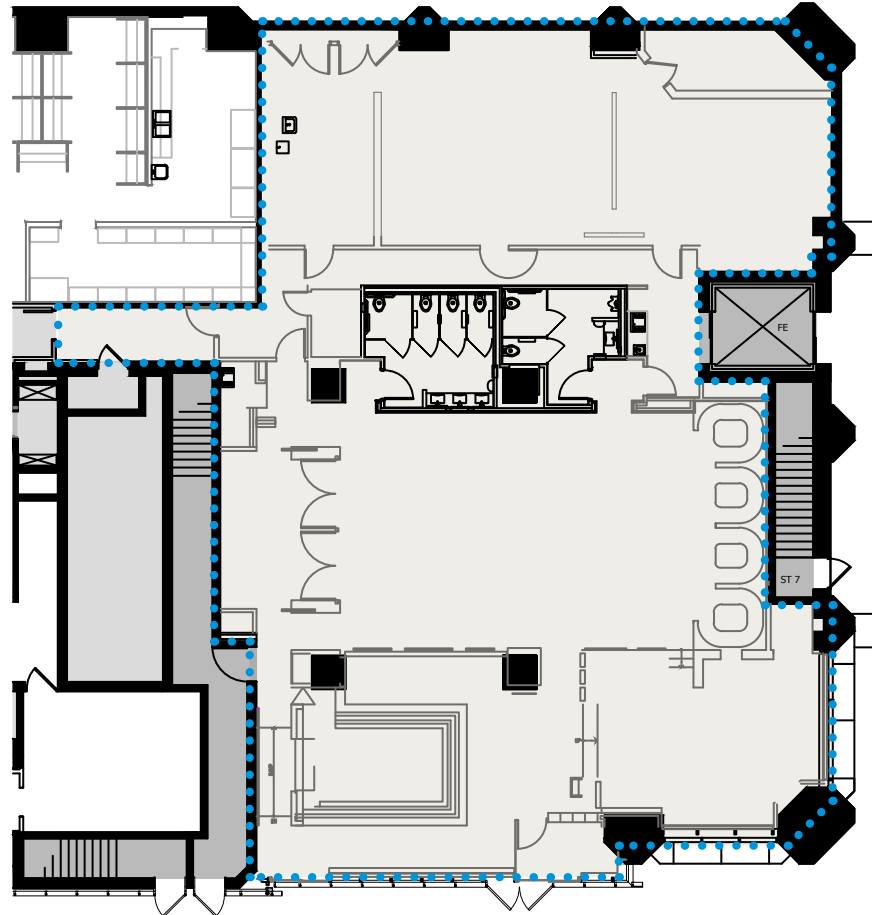
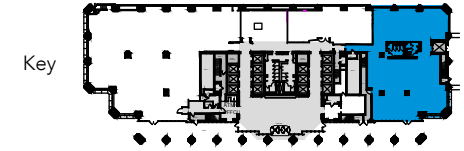
# Three Parkway | Availabilities

1601 Cherry Street • Philadelphia, PA

Floor 1

Suite 150

Size 6,121 RSF



## For Leasing Information

### Alex Breitmayer

Senior Vice President  
+1 215 399 1813  
alex.breitmayer@am.jll.com

### Josh Sloan

Managing Director  
+1 215 988 5554  
joshua.sloan@am.jll.com

### David Healy

Executive Vice President  
+1 215 988 5555  
david.healy@am.jll.com

### JLL | Jones Lang LaSalle

1650 Arch Street Suite 2500  
Philadelphia PA, 19103  
+1 215 988 5500

